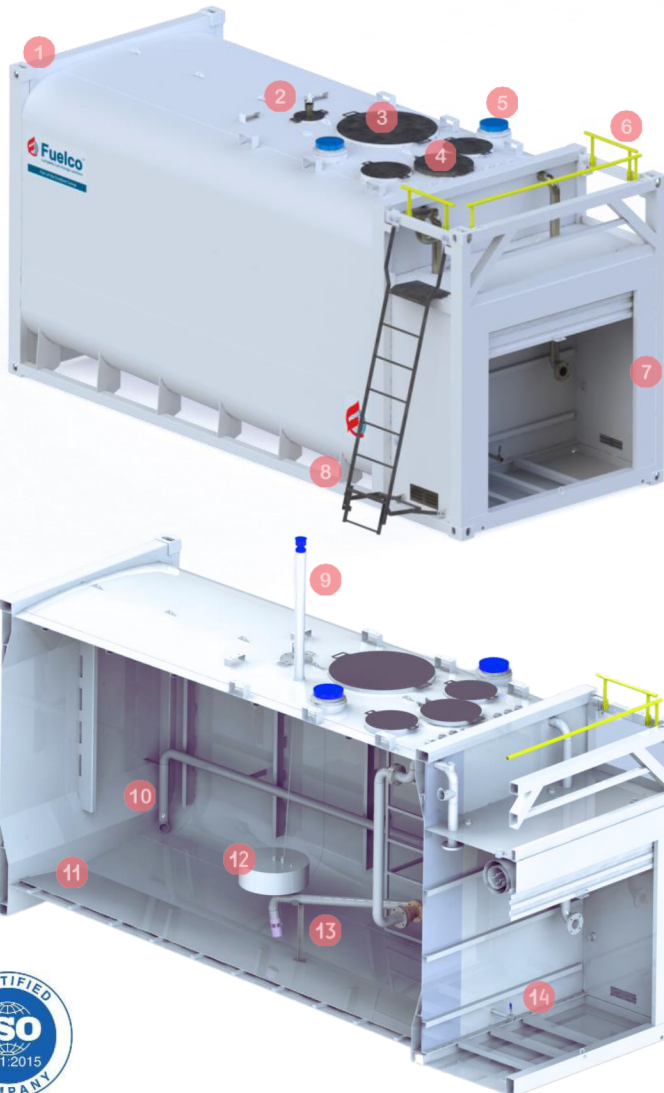


FUELCO AVIATION Self Bunded Tanks LTAV Range

10,000- 62,000L



- 1 **ISO LIFTING POINTS**
Simplifying crane handling
- 2 **FLOATING SUCTION INSPECTION HATCH**
With jiggle wire to access the suction float
- 3 **SECURE MANWAY WITH LADDER**
Providing access to tank for cleaning and inspections
- 4 **DIP HATCH**
With primary and interstitial dip
- 5 **EMERGENCY VENTING**
To protect the tank against over pressurization
- 6 **GUARD RAIL**
Ensures safety of the personnel
- 7 **SECURE WEATHER PROOF CABINET**
Keeps the fuel equipment safe and secure
- 8 **FOLD AWAY ACCESS LADDER**
Interchangeable on either side
- 9 **WORKING VENT**
With stainless steel mesh
- 10 **FILLING LINE**
At high end with angled outlet
- 11 **SLOPED FLOOR**
30:1 to ensure water accumulation at low point
- 12 **FLOATING SUCTION**
Ensures that product is always drawn from the top
- 13 **STAINLESS STEEL SUCTION LINE SUPPORT**
Prevents the suction line from reaching the tank floor
- 14 **LOW POINT DRAIN**
Allows simple drain/low point sample checking

Standard accessories include:

- ◆ Low point with water extraction line
- ◆ Stainless Steel fittings
- ◆ Overfill protection and electronic overfill alarm
- ◆ Galvanised tank trim to prevent nicks and scratches
- ◆ Pump bays designed to accept FUELCO pump packages
- ◆ Access platform to all ports and manway

The LTAV range is a heavy duty self-bunded design, developed specifically for the safe storage and handling of aviation fuels

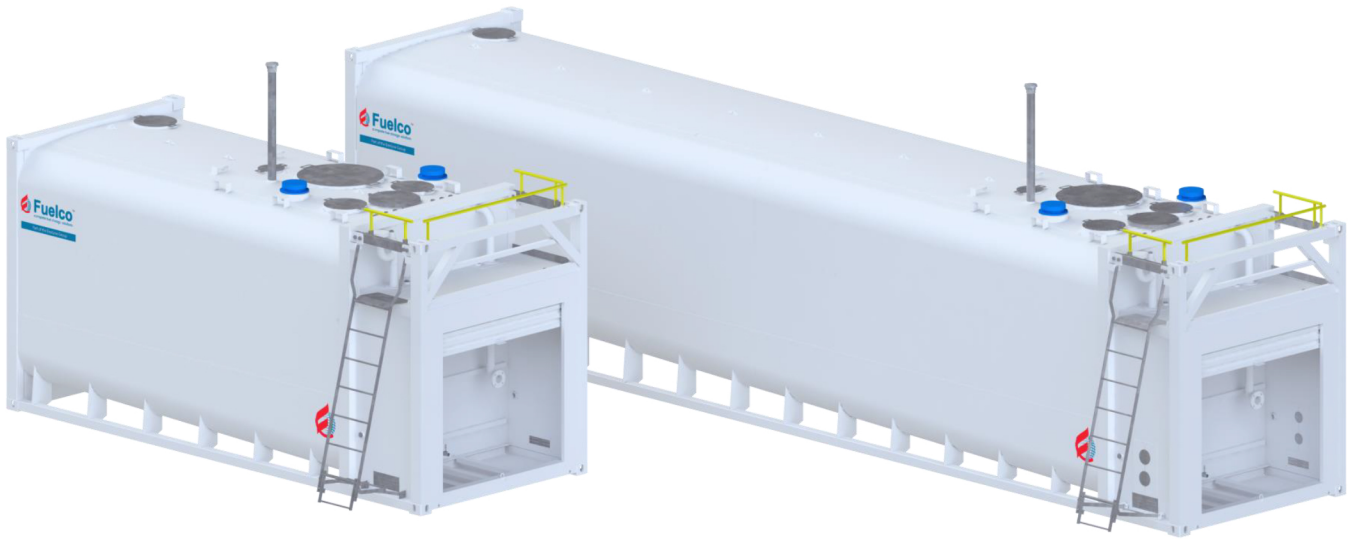
Fuelco, an ISO 9001 Certified Company

FUELCO AVIATION

Self Bunded Tanks

LTAV Range

10,000- 62,000L



Tank Code Stainless Steel	Pumpbay	Size	Capacity (GFL)	Dimensions (mm)			Tare Weight	Compliance
				Length	Width	Height		
LTAV - SS9 - EU	Yes	10ft	10,000	2,991	2,438	2,896	4,700	AS1692 JIG 1 AS1657 JIG-2 JIG-4 EI1540 UL142 ULC S601
LTAV - SS16 - EU	No	20ft	15,000	2,991	2,438	2,896	4,700	
LTAV - SS21 - EU	Yes	20ft	21,500	6,058	2,438	2,896	7,200	
LTAV - SS25 - EU	Yes	20ft	25,000	6,058	2,438	2,896	7,300	
LTAV - SS32 - EU	No	40ft	32,000	6,058	2,438	2,896	11,800	
LTAV - SS54 - EU	Yes	40ft	53,200	12,192	2,438	2,896	12,000	
LTAV - SS57 - EU	Yes	40ft	57,000	12,192	2,438	2,896	12,100	
LTAV - SS62 - EU	No	40ft	62,000	12,192	2,438	2,896	12,100	

Disclaimer: Information and photographs shown are for marketing purposes only. Actual product may vary to images shown due to continual improvement processes, design changes and optional extras



Octane Refuelling Systems

Octane House, Peace Street, Bradford, BD4 8UF
Telephone: 0113 2012 460 Email: tom@octane.uk.com
Website: www.octane.uk.com